

# TENDER BULLETIN

NO. 30/2016/17 FY

28 OCTOBER 2016



# LIMPOPO

**PROVINCIAL GOVERNMENT**  
REPUBLIC OF SOUTH AFRICA

This document is also available on the internet on the following website:

[www.limtreasury.gov.za](http://www.limtreasury.gov.za)

**Provincial Supply Chain Management Office**

## TABLE OF CONTENTS

	<b>Page No.</b>
1. REPORTING FRAUDULENT AND CORRUPT ACTIVITIES.....	03
2. INSTRUCTIONS.....	04
3. BID INVITATIONS FOR SUPPLIES, SERVICES AND DISPOSALS .....	05 – 09
4. BID INVITATION CANCELLED .....	
5. SPECIAL NOTICES.....	10– 13
ANNEXURE 1: ADDRESS LIST AND CONTACT DETAILS: PROVINCIAL DEPARTMENTS.....	14
ANNEXURE 2: ADDRESS LIST AND CONTACT DETAILS: PUBLIC ENTITIES.....	15
ANNEXURE 3: ADDRESS LIST AND CONTACT DETAILS: PROVINCIAL TREASURY TENDER ADVISE CENTRES .....	16
ANNEXURE 4: ADDRESS LIST AND CONTACT DETAILS: SATELLITE OFFICES .....	17

REPORT

**FRAUDULENT & CORRUPT ACTIVITIES ON GOVERNMENT  
PROCUREMENT SYSTEM**

---

**National Anti-Corruption @ 0800 701 701**

**Security and Investigating Services – Limpopo Provincial Treasury @  
015 298 7196**

---

**ALL COMPLAINTS/CONCERNS RELATED TO SCM NON-COMPLIANCE**

**MUST BE REPORTED TO:**

**LIMPOPO PROVINCIAL TREASURY**

**PRIVATE BAG X 9486**

**POLOKWANE**

**0700**

**PROVINCIAL TREASURY, FINANCE HOUSE, 56 – 58 PAUL KRUGER  
STREET, POLOKWANE**

## **2. INSTRUCTIONS**

1. Bidders are advised to read the entire tender bulletin.
2. Tenders for procurement of supplies, services and disposals are categorized as follows:

### **SUPPLIES**

- Accommodation, leasing of
- Audio visual equipment
- Building material
- Chemicals: Agricultural/Forestry/  
Laboratory/Water Care
- Clothing/Textiles
- Computer equipment
- Computer software
- Electrical equipment
- Electronic equipment
- Furniture
- General
- Medical
- Office equipment: Labour-saving  
devices
- Perishable provisions
- Stationary/printing
- Steel
- Timber
- Vehicle (all types)
- Workshop equipment

### **SERVICES**

- Building
- Civil
- Electrical
- Functional (including cleaning-,  
and security services)
- General
- Maintenance of electrical,  
mechanical  
equipment and plumbing
- Mechanical
- Professional
- Repair and maintenance of vehicles
- Transport

### **DISPOSALS**

- Clothing and textiles
- Furniture
- General
- Scrap metal
- Vehicles

3. Bid documents are generally available in English only.
4. The address where a bid document is available from and where it must be submitted to may differ.
5. The addresses at which bid documents may be obtained and to which tenders must be posted, appear in Annexure 1.
6. The address list of various Supply Chain Management Advice Centres at which bid documents and tender bulletins may also be obtained, appear in Annexure 3; and
7. The address list of Supply Chain Management satellite offices at which tender bulletins may also be obtained, appear in Annexure 4.

3. BID INVITATIONS FOR SUPPLIES, SERVICES AND DISPOSALS

BID NO.	DESCRIPTION OF SERVICE OR SUPPLIES	CONTACT DETAILS	BID DOCUMENT PRICE (NON-REFUNDABLE)	DUE AT 11H00	BID DOCUMENTS OBTAINABLE FROM	POST OR DELIVER BIDS TO
					See Annexure 1 & 2, Page 14 – 15	
WTVET 01/2016	Supply and delivery of perishables  <b>Waterberg TVET College</b>	<b>BIDDING PROCESS</b>  Mr. ND Mphahlele @ 015 492 9006/9002/9031  Email address @ <a href="mailto:procurement@waterbergcollege.co.za">procurement@waterbergcollege.co.za</a>	R80-00	03/11/2016	121	121
WTVET 02/2016	Supply and delivery of groceries  <b>Waterberg TVET College</b>	<b>BIDDING PROCESS</b>  Mr. ND Mphahlele @ 015 492 9006/9002/9031  Email address @ <a href="mailto:procurement@waterbergcollege.co.za">procurement@waterbergcollege.co.za</a>	R80-00	03/11/2016	121	121
WTVET 03/2016	Supply and delivery of security services  <b>Waterberg TVET College</b>	<b>BIDDING PROCESS</b>  Mr. ND Mphahlele @ 015 492 9006/9002/9031  Email address @ <a href="mailto:procurement@waterbergcollege.co.za">procurement@waterbergcollege.co.za</a>	R80-00	03/11/2016	121	121
WTVET 04/2016	Supply and delivery of building maintenance services  <b>Compulsory Briefing Session</b>	<b>BIDDING PROCESS</b>  Mr. ND Mphahlele @ 015 492 9006/9002/9031	R80-00	03/11/2016	121	121

	<p><b>Date:</b> 27/10/2016  <b>Time:</b> 10H00  <b>Venue:</b> New Central Office</p> <p><b>Waterberg TVET College</b></p>	<p>Email address @  <a href="mailto:procurement@waterbergcollege.co.za">procurement@waterbergcollege.co.za</a></p>				
WTVET 05/2016	<p>Supply and delivery of electrical and air conditioning maintenance services</p> <p><b>Compulsory Briefing Session</b></p> <p><b>Date:</b> 27/10/2016  <b>Time:</b> 10H30  <b>Venue:</b> New Central Office</p> <p><b>Waterberg TVET College</b></p>	<p><b>BIDDING PROCESS</b></p> <p>Mr. ND Mphahlele @  015 492 9006/9002/  9031</p> <p>Email address @  <a href="mailto:procurement@waterbergcollege.co.za">procurement@waterbergcollege.co.za</a></p>	R80-00	03/11/2016	121	121
WTVET 06/2016	<p>Supply and delivery of plumbing maintenance services</p> <p><b>Compulsory Briefing Session</b></p> <p><b>Date:</b> 27/10/2016  <b>Time:</b> 11H00  <b>Venue:</b> New Central Office</p> <p><b>Waterberg TVET College</b></p>	<p><b>BIDDING PROCESS</b></p> <p>Mr. ND Mphahlele @  015 492 9006/9002/  9031</p> <p>Email address @  <a href="mailto:procurement@waterbergcollege.co.za">procurement@waterbergcollege.co.za</a></p>	R80-00	03/11/2016	121	121
WTVET 07/2016	<p>Supply and delivery of bread</p> <p><b>Waterberg TVET College</b></p>	<p><b>BIDDING PROCESS</b></p> <p>Mr. ND Mphahlele @  015 492 9006/9002/  9031</p> <p>Email address @  <a href="mailto:procurement@waterbergcollege.co.za">procurement@waterbergcollege.co.za</a></p>	R80-00	03/11/2016	121	121
WTVET 08/2016	<p>Supply and delivery of liquid milk</p> <p><b>Waterberg TVET College</b></p>	<p><b>BIDDING PROCESS</b></p> <p>Mr. ND Mphahlele @  015 492 9006/9002/  9031</p> <p>Email address @  <a href="mailto:procurement@waterbergcollege.co.za">procurement@waterbergcollege.co.za</a></p>	R80-00	03/11/2016	121	121

WTVET 09/2016	Supply and delivery of computer equipment  <b>Waterberg TVET College</b>	<b>BIDDING PROCESSMs.</b> Sehlapelo @ 015492 9032  Email address @ <a href="mailto:procurement@waterbergcollege.co.za">procurement@waterbergcollege.co.za</a>	R80-00	03/11/2016	121	121
WTVET 10/2016	Supply and delivery of stationery  <b>Waterberg TVET College</b>	<b>BIDDING PROCESS</b> Mr. ND Mphahlele @ 015 492 9006/9002/ 9031 Email address @ <a href="mailto:procurement@waterbergcollege.co.za">procurement@waterbergcollege.co.za</a>	R80-00	03/11/2016	121	121
WTVET 11/2016	Supply and delivery of animal feeds and medication  <b>Waterberg TVET College</b>	<b>BIDDING PROCESS</b> Mr. ND Mphahlele @ 015 492 9006/9002/ 9031 Email address @ <a href="mailto:procurement@waterbergcollege.co.za">procurement@waterbergcollege.co.za</a>	R80-00	03/11/2016	121	121
VTVET 49/2016	Rendering of security services At Central Office  <b>Vhembe TVET College</b>	<b>BIDDING PROCESS</b> Ms. A Mamabolo @ 015 453 0763/ 071 420 4465	R100-00	17/11/2016	120	120
EDET 218/16	Project Management Services for the hosting of the annual Limpopo Marula Festival from 2017 TO 2019  <b>Compulsory Briefing Session</b>  <b>Date:</b> 16/11/2016 <b>Time:</b> 10H00 <b>Venue:</b> 19 Biccard Street Polokwane, Courtroom  <b>Economic Development</b>	<b>BIDDING PROCESS</b> Mr.FF Ramoraswi @ 015 293 8759 or Linda Mothutsi @ 015 293 8766  <b>TECHNICAL ASPECTS</b> Ngobeni M @015 293 8554	R80-00	29/11/2016	109	109

EDET 219/16	Supply , delivery and installation of three (3) mobile ablution facilities for state owned nature reserve  <b>Economic Development</b>	<b>BIDDING PROCESS</b> Mr.FF Ramoraswi @ 015 293 8759 or Linda Mothutsi @ 015 293 8766  <b>TECHNICAL ASPECTS</b> Ms.LT Kobe or Moeng Paulina @ 015 293 8545	R80-00	29/11/2016	109	109
EDET 220/16	Appointment of potential service provider for spatial mapping of the environmental authorization in terms of National Environmental Management Act,1998 ( Act No. 107 of 1998) and the Environment Conservation Act, 1989 (Act No 73 of 1989) Limpopo Province  <b>Economic Development</b>	<b>BIDDING PROCESS</b> Mr.FF Ramoraswi @ 015 293 8759 or Linda Mothutsi @ 015 293 8766  <b>TECHNICAL ASPECTS</b> VM Mongwe@ 082 412 5605	R80-00	29/11/2016	109	109
EDET 221/16	The refurbishment of 10 family unit charlets at Schuinsdraai Nature Reserve  <b>N.B. CIDB GRADE: 3GB</b>  <b>Compulsory Briefing Session</b>  <b>Date:</b> 16/11/2016 <b>Time:</b> 10H00 <b>Venue:</b> Schuinsdraai Nature Reserve  <b>Economic Development</b>	<b>BIDDING PROCESS</b> Mr.FF Ramoraswi @ 015 293 8759 or Linda Mothutsi @ 015 293 8766  <b>TECHNICAL ASPECTS</b> Ms.LT Kobe or Moeng Paulina @ 015 293 8545	R80-00	29/11/2016	109	109
LTP 002/2016	Rendering of physical security services for Limpopo Provincial Treasury at respective sites situated at the following areas: ( Mopani, Modimolle and Jane Furse respectively)  <b>Compulsory Briefing Session</b>  <b>Date:</b> 09/11/2016 <b>Time:</b> 10H00 <b>Venue:</b> Limpopo Provincial Treasury, Ismimi Towers,First	<b>BIDDING PROCESS</b> Mr.TH Maphanga @ 015 298 7055  Email address @ maphangath@treasury.limpopo.gov.za  <b>TECHNICAL ASPECTS</b> Mr. CM Mokwena @ 015 298 7000	R80-00	28/11/2016	101	101



	<b>Limpopo Provincial Treasury</b>					
HEDP82 8/16	Supply, delivery, installation, testing, commissioning, repair, maintenance and servicing of fire protection systems at all Health Facilities	<p><b>BIDDING PROCESS</b> Mr.N Kabe @ 015 293 6635 Ms. NM Motene @ 015 293 6352</p> <p><b>TECHNICAL ASPECTS</b> Mr. J Ramulai @ 015 293 6422</p>	R80-00	18/11/2016	103	103
	<b>Department of Health</b>					
HEDP83 2/16	The provision of fumigation, bush clearing, pest and snake control service to all Department of Health Facilities in Vhembe, Mopani, Capricorn, Sekhukhune and Waterberg District for a period of three (3)years	<p><b>BIDDING PROCESS</b> Ms.LR Mamabolo @ 015 293 6646 Ms. NM Motene @ 015 293 6352</p> <p><b>TECHNICAL ASPECTS</b> Mr. LM Mulaudzi @ 015 293 6145</p>	R80-00	21/11/2016	103	103
	<b>Department of Health</b>					

**5. SPECIAL NOTICES**

**5.1 DEPARTMENT OF EDUCATION: NOTICE TO TENDERS: EDDP 737**

**EDDP 737:** Bid for the supply, delivery and installation of 80 interactive white boards was cancelled due to unclear specification and a new (EDDP:741) is re-advertised. All bidders who participated in the previous bid (EDDP 737) will be issued with a new bid document for free at Head Office of the Department.

**5.2 DEPARTMENT OF EDUCATION: NOTICE TO TENDERS: EDDP 741, EDDP 742 AND EDDP 743**

**NB.** The closing date for the above mentioned bids is extended to 15<sup>th</sup> November 2016 at 11am.

**EXTENTION OF CLOSING DATE OF THE FOLLOWING BIDS:**

<b>BID NO</b>	<b>DISCRIPTION</b>	<b>INITIAL DATE</b>	<b>NEW DATE</b>
EDDP 741	The supply, delivery and installation of 80 interactive white boards.	07 November 2016	15 November 2016
EDDP 742	The supply and delivery of set of eating utensils for primary schools at Capricorn and Waterberg District	07 November 2016	15 November 2016
EDDP 743	The supply and delivery of IT consumables.	07 November 2016	15 November 2016

**5.3 LIMPOPO PROVINCIAL TREASURY: EXTENSION OF VALIDITY PERIOD: LPT 004/2015 AND LPT 001/2016 RESPECTIVELY**

The extension of the validity period for bid no. LPT 004/2015 and LPT 001/2016 respectively. These bids were advertised in Provincial Tender Bulletin no. 09/2016/17FY dated 03 June 2016 and valid for a period of 120 days from the date of closure for both bids (01 July 2016). The validity period is extended for a period of 30 days from 30 October 2016 to 30 November 2016.

<b>Bid Number</b>		<b>Notice</b>
<b>1</b>	<b>LPT 004/2015 and LPT 001/2016</b>	Extension of the validity period for bid no. LPT 004/2015 and LPT 001/2016 respectively for a period of 30 days from 30 October 2016 to 30 November 2016 <b>LIMPOPO PROVINCIAL TREASURY</b>

**5.4 (SCM Advice Centers): LIMPOPO PROVINCIAL TREASURY  
ADVERTISEMENTS OF LIMPOPO CSD CALL CENTRE LINES FOR SUPPLIERS IN THE TENDER BULLETIN:-****LIMPOPO CSD CALL CENTRE LINES FOR SUPPLIERS**

<b>DISTRICT</b>	<b>CALL CENTRE NUMBER</b>	<b>OFFICIAL RESPONSIBLE</b>	<b>TIME</b>
Capricorn	015 291 8737	Mr.Holeni TI	07H30 TO 16H30
Mopani	015 812 0256	Ms. Nxumalo P	07H30 TO 16H30
Sekhukhune	013 265 0171	Mrs Morena MM	07H30 TO 16H30
Vhembe	015 962 0014	Mrs. Nefolovhodwe MQ	07H30 TO 16H30
Waterberg	014 717 1376	Mrs. Tsatsi AT	07H30 TO 16H30

6 BID INVITATIONS CANCELLED

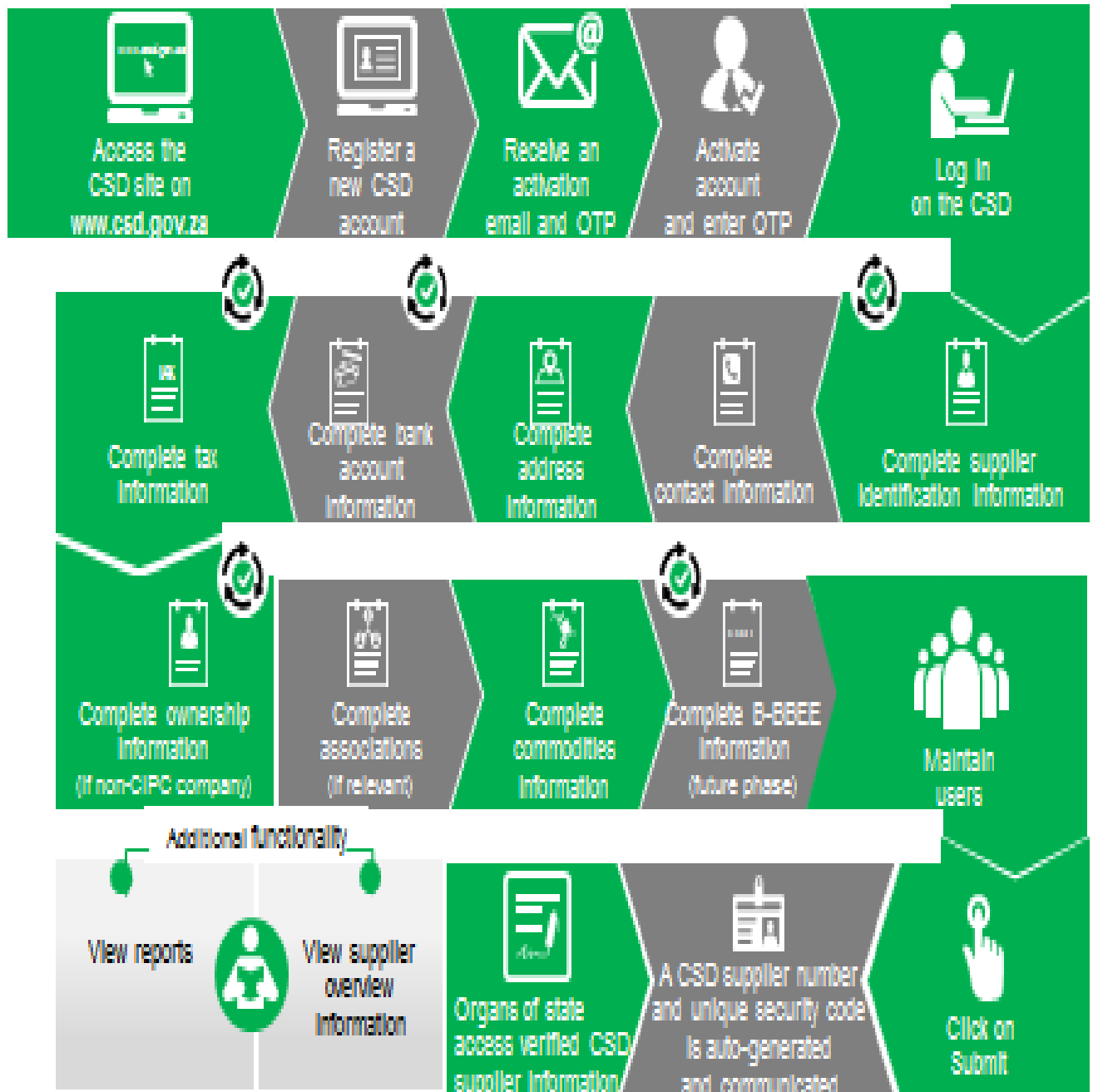
DEPARTMENT OF HEALTH: NOTICE TO ALL PROSPECTIVE BIDDERS

CANCELLATION OF BID HEDP 836/16: SUPPLY AND DELIVERY OF GROCERY FOR ALL HOSPITALS IN THE DEPARTMENT OF HEALTH: LIMPOPO PROVINCE

TENDER BULLETIN NO.	BID NO	PROJECT DESCRIPTION	DATE ADVERTISED	DATE CLOSED	REASON FOR CANCELLATION
25/2016/17FY	HEDP 836/16	Supply and delivery of grocery for all hospitals in the department of Health: Limpopo Province	23 September 2016	15/11/2016	Significant error on the specification

The bid will be re advertised in due course and bidders who already purchased bid documents will be provided with a free bid document, provided proof of purchase is provided. Bidders are requested

# Supplier Self-Registration Process



Auto verification of supplier information with SARS, GIPC etc

**ANNEXURE 1: ADDRESS LIST AND CONTACT DETAILS: LIMPOPO PROVINCIAL DEPARTMENTS**

UNIQUE REF. NO.	BID DOCUMENT REFERENCE	CONTACT DETAILS	DOCUMENTS SOLD AT:	DOCUMENTS DEPOSITED AT
100	DSDP	Tel: 015 293 6000 Fax: 015 293 6211 Website: <a href="http://www.limpopo.gov.za">www.limpopo.gov.za</a>	<b>Department of Social Development</b> , Office No. D3 Ground Floor, Old Capricorn Building, 18 College Street, POLOKWANE and all Provincial Treasury Tender Advice Centres	Deposited in the box located at Department of Health and Social Development, 18 College Street, Polokwane
101	LPT	Tel: 015 298 7000 Fax: 015 295 7010 Website: <a href="http://www.limpopo.gov.za">www.limpopo.gov.za</a>	<b>Provincial Treasury</b> 46 Hans Van Rensburg Street, POLOKWANE and all Provincial Treasury Tender Advice Centres	Deposited in the bid box located outside a guard house at Ismini Towers, 46 Hans Van Rensburg Street, Polokwane
101A	TC/LP	Tel: 015 291 8400 Fax: 015 295 3310 Website: <a href="http://www.limpopo.gov.za">www.limpopo.gov.za</a>	<b>Provincial Treasury</b> 56 – 58 Paul Kruger Street, POLOKWANE and all Provincial Treasury Tender Advice Centres	Deposited in the bid box located in the main entrance, Finance House Building, 56-58 Paul Kruger Street, Polokwane
102	PRDP	Tel: 015 287 6000 Fax: 015 295 3840 Website: <a href="http://www.limpopo.gov.za">www.limpopo.gov.za</a>	<b>Office of the Premier</b> , 40 Hans van Rensburg Street, POLOKWANE and all SCM Advice Centres	Deposited in the bid box located at Mowaneng Building, 40 Hans van Rensburg Street, Polokwane
103	HEDP	Tel: 015 293 6000 Fax: 015 293 6211 Website: <a href="http://www.limpopo.gov.za">www.limpopo.gov.za</a>	<b>Department of Health</b> , Office No. D3 Ground Floor, Old Capricorn Building, 18 College Street, POLOKWANE and all Provincial Treasury Tender Advice Centres	Deposited in the box located at Department of Health and Social Development, 18 College Street, Polokwane
104	LPEDT	Tel: 015 290 7600/1 Fax: 015 297 4494 Website: <a href="http://www.limpopo.gov.za">www.limpopo.gov.za</a>	<b>Department of Education</b> , Corner 113 Biccard and 24 Excelsior Streets, POLOKWANE and all Provincial Treasury Tender Advice Centres	Deposited in the bid box located in the main entrance of corner 113 Biccard Street and Excelsior Street, Polokwane
105	PUDP	Tel: 015 295 1000 Fax: 015 295 1163 Website: <a href="http://www.limpopo.gov.za">www.limpopo.gov.za</a>	<b>Department of Roads &amp; Transport</b> , 40 Paul Kruger Street, POLOKWANE and all Provincial Treasury Tender Advice Centres	Deposited in the bid box located at 1 <sup>st</sup> Floor, Paul Kruger Wing, 40 Paul Kruger Street, Polokwane
106	DSSL	Tel: 015 290 2900 Fax: 015 291 4452 Website: <a href="http://www.limpopo.gov.za">www.limpopo.gov.za</a>	<b>Department of Safety, Security and Liaison</b> , 32 Schoeman Street, POLOKWANE and all Provincial Treasury Tender Advice Centres	Deposited in the bid box located in the main entrance of 32 Schoeman Street, Polokwane
107	COGHSTA	Tel: 015 294 2000 Fax: 015 295 4190 Website: <a href="http://www.limpopo.gov.za">www.limpopo.gov.za</a>	<b>Department of Co-Operative Governance, Human Settlements &amp; Traditional Affairs</b> , 28 Market Street, Office No. G 74, Ground Floor, Polokwane.	Deposited in the bid box located at Hensa Towers, Cnr of Rabe and Landdros Mare Streets, Polokwane
108	DSAC	Tel: 015 284 4000 Fax: 015 284 4514 Website: <a href="http://www.limpopo.gov.za">www.limpopo.gov.za</a>	<b>Department of Sport, Arts and Culture</b> Olympic Towers, Corner Rabe and Biccard Street, POLOKWANE and all Provincial Treasury Tender Advice Centre	Deposited in the bid box located in the main entrance of Olympic Towers, Corner 21 Rabe and Biccard Street, Polokwane
109	LEDET	Tel: 015 293 8300 Fax: 015 293 8319 Website: <a href="http://www.limpopo.gov.za">www.limpopo.gov.za</a>	<b>Department of Economic Development, Environment &amp; Tourism</b> , 90 Bok Street, POLOKWANE and all SCM Advice Centres	Deposited in the bid box located in the main entrance of Evridiki Towers, 20 Hans Van Rensburg Street, Polokwane
110	LDPW & WODP	Tel: 015 284 7000 Fax: 015 284 7031 Website: <a href="http://www.limpopo.gov.za">www.limpopo.gov.za</a>	<b>Department of Public Works</b> , Works Towers, 43 Church Street, POLOKWANE and all Provincial Treasury Tender Advice Centres	Deposited in the bid box located at Corner Blaawberg and River Street Ladanna Polokwane 0699 Private Bag X9490 Polokwane 0700
111	ACDP	Tel: 015 294 3000/30/60/90/20 Fax: 015 294 4506 Website: <a href="http://www.limpopo.gov.za">www.limpopo.gov.za</a>	<b>Department of Agriculture</b> , Temo Towers, 69 Biccard Street, POLOKWANE and all Provincial Treasury Tender Advice Centres	Deposited in the bid box located in the main entrance of AgriVillage, 69 Biccard Street, Polokwane

ANNEXURE 2: ADDRESS LIST AND CONTACT DETAILS: LIMPOPO PUBLIC ENTITIES

UNIQUE REF. NO.	BID DOCUMENT REFERENCE	CONTACT DETAILS	DOCUMENTS SOLD AT:	DOCUMENTS DEPOSITED AT
112	RFB: LIMP	Tel: 015 293 3621 Fax: 015 293 3660 Website: <a href="http://www.golimpopo.co">www.golimpopo.co</a>	<b>State Information Technology Agency (SITA)</b> Limpopo Office, Moolman Building, 27 Market Street, POLOKWANE, 0699	Bid box located in the Main Entrance of Moolman Building, 27 Market Street, Polokwane
113	LTA	Tel: 015 293 3600 Fax: 015 293 3655 Website: <a href="http://www.golimpopo.com">www.golimpopo.com</a>	<b>Limpopo Tourism Agency</b> , ERF 92/688, Portion 2 Southern Gateway, Ext 4, N1 Main Road, Polokwane 0699	Bid box located in the offices ERF 92/688, Portion 2 Southern Gateway, Ext 4, N1 Main Road, Polokwane 0699
114	LGB	Tel: 015 295 5581 Fax: 015 295 3566 Website: <a href="http://www.lgb.org">www.lgb.org</a>	<b>Limpopo Gambling Board</b> , 22 Schoeman Street, POLOKWANE, from 08H30 to 16H00	Bid box located in the main entrance, ground floor, 22 Schoeman Street, Polokwane
115	TIL	Tel: 015 295 5171 Fax: 015 295 5197 Website: <a href="http://www.til.co.za">www.til.co.za</a>	<b>Trade and Investment Limpopo</b> 130A Marshall Street, POLOKWANE, 0699	Bid box located in the main entrance, ground floor, 130 A Marshall Street, Polokwane
116	LIBSA	Tel: 015 287 3000 Fax: 015 297 6732 Website: <a href="http://www.libsa.co.za">www.libsa.co.za</a>	<b>Limpopo Business Support Agency</b> , 06 Platinum Street, Ladine, POLOKWANE, 0700	Bid box located in the main entrance, 06 Platinum Street, Ladine, Polokwane
117	RAL	Tel: 015 284 4600 Fax: 015 284 4701 Website: <a href="http://www.ral.co.za">www.ral.co.za</a>	<b>Road Agency Limpopo (RAL)</b> , RAL Towers, 26 Rabe Street, POLOKWANE, 0700	Bid box located in the entrance foyer (ground floor) of RAL Towers, at 26 Rabe Street, Polokwane
118	LADC	Tel: 015 296 3543 Fax: 015 296 3549 Website: <a href="http://www.limpopo.gov.za">www.limpopo.gov.za</a>	<b>Limpopo Agribusiness Development Corporation</b> , 29 Rhodes Drist Street, Bendor, POLOKWANE, 0699	Bid box located in the main entrance, 29 Rhodes Drist Street, Bendor, Polokwane,
119	GAAL	Tel: 015 288 0122 Fax: 015 288 0346 Website: <a href="http://www.gaal.co.za">www.gaal.co.za</a>	<b>Gateway Airports Authority Limited</b> , N1 Road to Louis Trichardt, Army Base, POLOKWANE International Airport, Polokwane, 0700	Bid box located in the main entrance, ground floor of administration building, Polokwane International Airport, Army Base
120	VIVET	Tel: 015 963 3156 Fax: 015 963 3154 Website: <a href="mailto:www.fetcol@mweb.co.za">www.fetcol@mweb.co.za</a>	<b>Vhembe FET College</b> , Stand No. 203, Unit A, Sibasa, 0970, Limpopo Province	Vhembe Fet College, Central Office, Private Bag X2136, SIBASA 0970

**ANNEXURE 3: ADDRESS LIST AND CONTACT DETAILS: PROVINCIAL TREASURY TENDER ADVICE CENTRES**

(Tender bulletins and bid documents are obtainable from the following Centers):

<b>PROVINCIAL TREASURY SUPPLY CHAIN MANAGEMENT ADVICE CENTRES</b>	
<p><b>HEAD OFFICE</b></p> <p>Provincial Supply Chain Management Office 56 – 58 Paul Kruger Street POLOKWANE Private Bag x9494 <b>POLOKWANE, 0700</b> <b>Tel No. (015) 291 8400</b></p> <p>Contact: <b>Ms. M.B. Malope</b> @ Tel: 015 291 8717/6</p>	<p><b>Capricorn SCM Advice Centre</b></p> <p>Limpopo Provincial Treasury 56-58 Paul Kruger Street Private Bag x9494 <b>POLOKWANE, 0700</b> <b>Tel No. (015) 291 8400</b></p> <p>Contact Person: <b>Ms. M.M. Masindi</b></p>
<p><b>Vhembe SCM Advice Centre</b></p> <p>Limpopo Provincial Treasury Government Building Complex BLOCK E, GROUND FLOOR <b>THOHOYANDOU, VENDA</b> Tel: (015) 962 1752 Fax: (015) 962 1282</p> <p>Contact Person: <b>Ms. A. Budeli</b></p>	<p><b>Mopani SCM Advice Centre</b></p> <p>Limpopo Provincial Treasury Private Bag X 1973 <b>GIYANI, 0826</b> Tel: (015) 812 0149 Fax: 086 219 7905</p> <p>Contact Person: <b>Mr. M. B. Mbedzi</b></p>
<p><b>Waterberg SCM Advice Centre</b></p> <p>Limpopo Provincial Treasury 98 Nelson Mandela Street Decimale Building <b>MODIMOLLE</b> Tel: (014) 717 5837 Fax: (014) 717 5670</p> <p>Contact Person: <b>Mr. P.E. Mogoroga</b></p>	<p><b>Sekhukhune SCM Advice Centre</b></p> <p>Limpopo Provincial Treasury Lefa Centre, Schoonoord Road <b>JANE FURSE</b> Tel: (013) 265 1344 Fax: (013) 265 1354</p> <p>Contact Person: <b>Mr. M. S. Sehale</b></p>



**ANNEXURE 4: ADDRESS LIST AND CONTACT DETAILS: SATELLITE OFFICES**

(Tender bulletins are obtainable from the following centers)

<b>CAPRICORN</b>	<b>VHEMBE</b>	<b>MOPANI</b>	<b>WATERBERG</b>	<b>SEKHUKHUNE</b>
Lebowakgomo LIBSA	Dzanani Revenue Office Tel. No. (015) 970 4969	Namakgale Revenue Office Tel. No. (015) 761 3119	Libsa Thabazimbi: No.08 Riet Bok Street Tel. No. (014) 772 2437	Tubatse Libsa Tubatse Municipality Tel. No. (013) 231 8530
Seshego (Economic Dev. Offices Zone 8) Tel. No. (015) 223 7990	Malamulele Revenue Office Tel. No. (015) 871 0608	Ritavi DCO Tel. No. (015) 303 0455	Libsa Lephalale No. 3A Venter Street Tel. No. (014) 763 2834	Fetakgomo Libsa Fetakgomo Municipality Tel. No. (015) 622 8904
Ga-Thoka (Department of Economic Development)	Musina Revenue Office Tel. No. (015) 534 2713	Naphuno Magistrate Office Tel. No. (015) 355 4972	Bela-Bela Local Municipality (Bela-Bela) Tel. No. (014) 736 8000	Atok Thusong Service Centre Atok
Senoamadi Complex- Morebeng next to Taxi Rank-Economic Development Offices Contact Mr. Pheha @ 084 602 423	Mutale Revenue Office Tel. No. 072 252 7153	Lulekani Magistrate Offices Tel. No. (015) 783 0486	Mookgophong Local Municipality (Mookgopong) Tel.No. (014) 743 1111	Maatla-ke batho Libsa Marblehall Tel. No. (013) 261 2642
Bochum: LIBSA	Soutpansberg Revenue Office Tel. No. (015) 516 0002	Economic Development Offices in Tzaneen 20b Peace Street, Cnr Peace and Hermanus Tel. No. (015) 307 1195	Libsa Mokopane 90 Retief Street Tel. 015 491 8582 Fax: 015 491 8584	Seda Groblesdal Tel. No. (013) 262 3651
Mathabatha Tribal Authority Ga-Mathabatha	Tshilwavhusiku Revenue Office (015) 571 5277	Bolobedu Revenue Office Tel. No. (015) 328 3377		
Mafefe Tribal Authority  MAFEFE	Tshitale Revenue Office Tel. No. (015) 975 1717	Hlanganani Revenue Office operating within Khomeanani Tribal Authority at Majosi. Tel. No. 072 304 3916		
	Vuwani Revenue Office Tel. No. 072 058 1910			